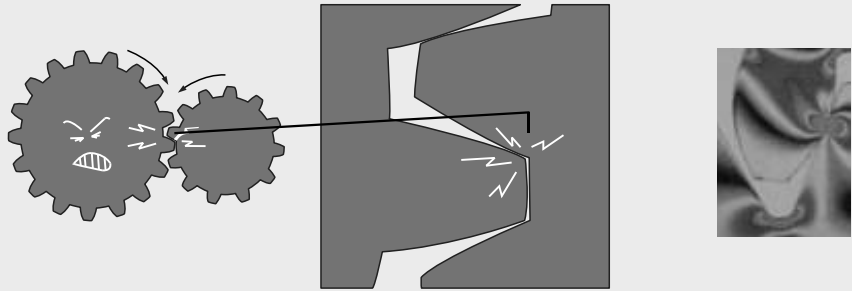


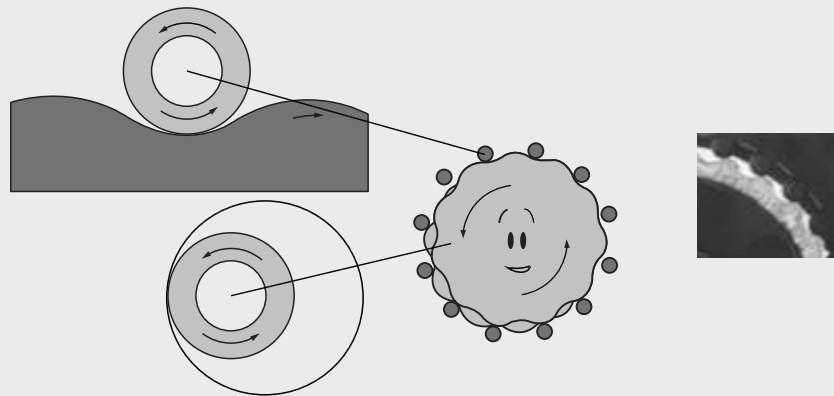
인볼류트 기어

매끄러운 접촉
맞물림율이 적기때문에
충격하중이 발생하면
1~2개의 톱니에
충격이 집중됩니다.



CYCLO감속기

매끄러운 굴림접촉
맞물림율이 인볼류트
기어보다 2~3배 높고,
충격하중이 발생하여도
많은 톱니에서 분산
흡수하므로, 강하고
긴 수명의 감속기입니다.



● 효율이 높아 경제적이다. Overall Economy.

1단에서 90%, 2단에서 80%이상으로 고효율을 얻을 수 있어 타 감속기보다 경제적입니다.

Competitive initial cost, high reliability, long life and minimal maintenance give CYCLOID speed reducers superior overall economy when compared to conventional gearboxes.

● 소형 경량이다. Compact Size.

1단에서 1/6~1/119의 감속과 2단, 3단으로 수천에서 수십만 분의 1 감속을 할 수 있어 소형이고 경량화 하였습니다.

Single stage reduction ratios are available from 6:1 to 119:1, double stage up to 7,569:1 and triple stage up to almost 1,000,000:1. Fewer stages provide a much smaller footprint and envelope.

특징 (Features)

● **운전이 원활하고 소음이 적다.** Low Noise.

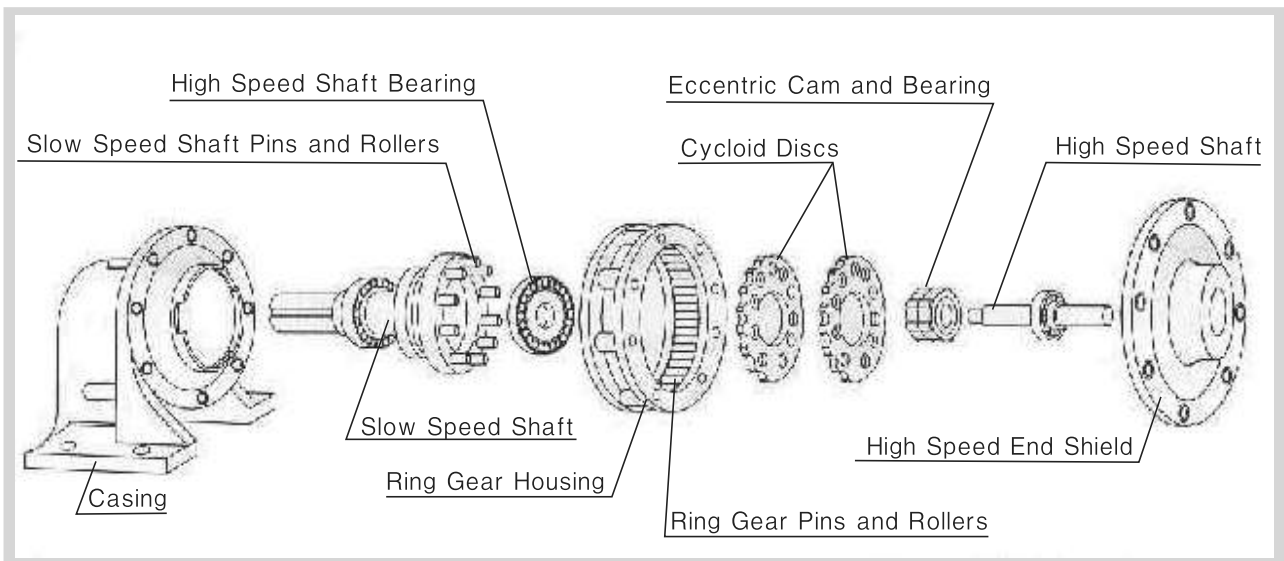
치면이 구름 접촉을 하고, 치면을 정밀 연삭을 하여 운전이 원활하고 소음 진동이 적습니다.

When compared with the sliding tooth contact of conventional gearing, the rolling contact of the CYCLOID system reduces noise levels.

● **기종이 다양하고 보전작업이 용이하다.** Maintenance Free Durability

용도에 따라 다양한 취부 형태의 부품이 표준화되어 있어 선택의 폭이 크고, 표준화된 부품과 간단한 구조로 보전 작업이 용이 합니다.

Because of various mounting types of parts as per application, that have already been standardized, it can take a wide room for selection, and it keeps easy maintenance with standard parts and simple structure.



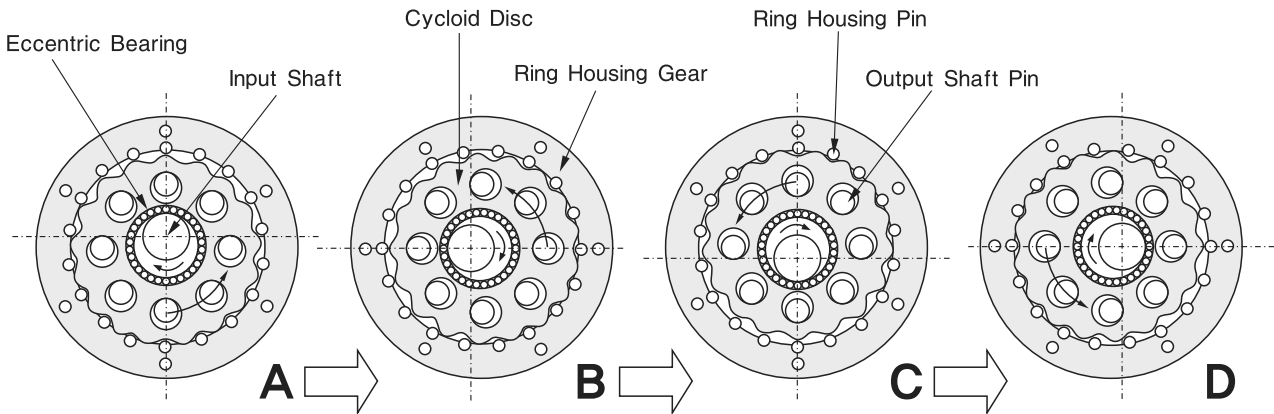
구조 및 원리 (Principle Of Operation)

싸이크로이드 치형 감속기의 구성은 아래 그림의 부품으로 구성 되어 있다.

- 1) 입력부는 입력축 또는 모터축에 편심캠, 베어링, 오일씰
- 2) 감속부는 곡선판, 링기어하우징, 핀, 롤러
- 3) 출력부는 출력샤프트, 베어링, 케이스로 구성된다.

The cycloidal design basically has three major components.

- 1) Input shaft assembly (high speed) with eccentric cam, roller bearing and oil seals.
- 2) Cycloid disc, Ringgear Housing, Pin, Bush
- 3) Output shaft assembly (slow speed) with support bearings and case.



감속원리는 입력축에 전달된 토크는 편심캠의 운동으로 회전하고 그 운동으로 링기어 하우징의 내부 곡선판을 회전 시킨다. 링기어 하우징에 고정되어 있는 핀과 접촉하는 곡선판의 회전으로 출력축이 반대 방향으로 회전하게 됩니다. 편심캠 1회전시 곡선판 1개 잇수만큼 이동하게 되고, 곡선판 내부 홈에 삽입되어 있는 출력축 고정핀에 의하여 출력축이 회전하면서 감속된 회전수를 얻을 수 있다.

(Torque transmitted to the high-speed shaft rotates the eccentric cam and roller bearing assembly, and rolls the cycloid discs around the internal circumference of the stationary ring gear housing. The teeth of the cycloid discs contact the pins of the stationary ring gear, producing a reverse rotation at a reduced speed.

Each rotation of the high-speed shaft advances the cycloid discs a distance of one tooth pitch in the opposite direction. The reduced rotation of cycloid discs is transmitted to the output shaft assembly by means of drive pins and rollers that are projected through holes located around the bore of the cycloid discs.)

성능 및 선정표(4P) 1단 (Selection & Performance table - Single Reduction - 4P)

Ratio	Motor		50 Hz			60 Hz			Model	Dimension Dwg (Page)	
	CAP (KW)	Sym	Output Speed rpm	Output Torque Kgf.m	SF	Output Speed rpm	Output Torque Kgf.m	SF		CAP-Frame-Ratio	H
	6	0.2	02	250	0.76	2.0	300	0.63	2.0		02-8808-6
0.4		05	1.5		1.95	1.25		1.95	05-8808-6	44	54
0.75		1	2.85		2.0	2.35		2.0	1-8809-6	44	54
1.5		2	5.7		2.1	4.7		2.1	2-8810-6	44	54
2.2		3	8.4		1.4	6.9		1.4	3-8810-6	44	54
					1.7			1.7	3-8811-6	44	54
3.7		5	14.2		1.0	11.7		1.0	5-8811-6	44	54
					1.8			1.5	5-8812-6	44	54
5.5		8	21.0		1.2	17.0		1.0	8-8812-6	44	54
					2.0			2.0	8-8813-6	44	54
7.5		10	28.5		1.5	23.5		1.5	10-8813-6	44	54
					2.0			2.0	10-8814-6	44	54
11		15	42.0		1.0	34.7		1.0	15-8813-6	44	54
					1.3			1.3	15-8814-6	44	54
	1.8			1.8	15-8816-6		44	54			
15	20	57.2	1.6	47.3	1.6	20-8816-6	44	54			
18.5	25	70.0	1.6	58.2	1.6	25-8817-6	44	54			
8	0.2	02	188	1.0	2.0	225	0.8	2.0	02-8808-8	44	54
	0.4	05		2.0	1.95		1.65	1.95	05-8808-8	44	54
	0.75	1		3.8	2.0		3.1	2.0	1-8809-8	44	54
	1.5	2		7.6	2.1		6.3	2.1	2-8810-8	44	54
	2.2	3		11.0	1.4		9.3	1.4	3-8810-8	44	54
					1.7			1.7	3-8811-8	44	54
	3.7	5		18.5	1.0		15.3	1.0	5-8811-8	44	54
					1.8			1.8	5-8812-8	44	54
	5.5	8		28.0	1.24		23.0	1.23	8-8812-8	44	54
					2.0			2.0	8-8813-8	44	54
	7.5	10		38.0	1.5		31.5	1.5	10-8813-8	44	54
					2.0			2.0	10-8814-8	44	54
	11	15		56.0	1.37		46.2	1.37	15-8814-8	44	54
					1.79			1.79	15-8816-8	44	54
15	20	76.5	1.6	63.0	1.6	20-8816-8	44	54			

성능 및 선정표(4P) 1단 (Selection & Performance table - Single Reduction - 4P)

Ratio	Motor		50 Hz			60 Hz			Model	Dimension Dwg (Page)	
	CAP (KW)	Sym	Output Speed rpm	Output Torque Kgf.m	SF	Output Speed rpm	Output Torque Kgf.m	SF		CAP-Frame-Ratio	H
	11	0.2	02	136	1.4	1.4	164	1.13	1.4	02-8807-11	44
2.0						2.0			02-8808-11	44	54
0.4		05	2.8		1.9	2.3		1.9	05-8808-11	44	54
					3.05			3.02	05-8809-11	44	54
0.75		1	5.2		2.0	4.3		2.0	1-8809-11	44	54
					3.62			3.06	1-8810-11	44	54
1.5		2	10.3		2.1	8.7		2.1	2-8810-11	44	54
					3.35			3.32	2-8811-11	44	54
2.2		3	15.2		1.4	12.5		1.4	3-8810-11	44	54
					1.7			1.7	3-8811-11	44	54
3.7		5	26.0		1.0	21.0		1.0	5-8811-11	44	54
					2.5			2.5	5-8813-11	44	54
5.5		8	38.2		2.0	32.0		2.0	8-8813-11	44	54
					1.5			1.5	10-8813-11	44	54
7.5		10	52.3		1.7	43.2		1.7	10-8814-11	44	54
					1.3			1.3	15-8814-11	44	54
11		15	77.0		1.7	63.5		1.7	15-8816-11	44	54
					1.6			1.6	20-8816-11	44	54
15	20	105	1.8	87.0	1.8	20-8817-11	44	54			
			1.6		1.6	25-8817-11	44	54			
18.5	25	130	1.9	108	1.9	25-8818-11	44	56			
			1.3		1.3	30-8817-11	44	54			
22	30	150	1.7	125	1.7	30-8818-11	44	56			
			1.3		1.3	40-8818-11	44	56			
30	40	206	1.6	170	1.6	40-8819-11	46	56			
			1.3		1.3	50-8819-11	46	56			
37	50	255	1.6	210	1.6	50-8820-11	46	56			
			1.3		1.3	60-8820-11	46	56			
45	60	310	1.6	260	1.6	60-8821-11	46	56			
			1.3		1.3	75-8821-11	46	56			
55	75	380	1.8	320	1.8	75-8822-11	46	56			
			1.3		1.3	100-8822-11	46	56			
75	100	520	1.3	430	1.3						
13	0.2	02	115	1.63	1.4	138	1.35	1.4	02-8807-13	44	54
					2.0			2.0	02-8808-13	44	54
	0.4	05		3.3	1.9		2.7	1.9	05-8808-13	44	54
					3.0			3.0	05-8809-13	44	54
	0.75	1		6.0	2.0		5.0	2.0	1-8809-13	44	54
					3.54			3.52	1-8810-13	44	54
	1.5	2		12	2.0		10.0	2.0	2-8810-13	44	54
					1.4			1.4	3-8810-13	44	54
	2.2	3		18	1.7		15.0	1.7	3-8811-13	44	54
					1.0			1.0	5-8811-13	44	54
	3.7	5		30	1.35		25.0	1.35	5-8812-13	44	54
					2.0			2.0	8-8813-13	44	54
	5.5	8		45	1.3		37.5	1.3	10-8813-13	44	54
					2.0			2.0	10-8814-13	44	54
	7.5	10		62	1.7		51.0	1.7	15-8816-13	44	54
					1.5			1.5	20-8816-13	44	54
	11	15		91	1.8		75.0	1.8	20-8817-13	44	54
					1.6			1.6	25-8817-13	44	54
15	20	120	1.9	100	1.9	25-8818-13	44	54			
			1.3		1.3	30-8817-13	44	54			
18.5	25	150	1.7	125	1.7	30-8818-13	44	56			
			1.3		1.3	40-8818-13	44	56			
22	30	180	1.6	150	1.6	40-8819-13	46	56			
			1.3		1.3	50-8819-13	46	56			
30	50	245	1.6	203	1.6	50-8819-13	46	56			
			1.3		1.3						
37	50	305	1.3	250	1.3						

성능 및 선정표(4P) 1단 (Selection & Performance table - Single Reduction - 4P)

Ratio	Motor		50 Hz			60 Hz			Model	Dimension Dwg (Page)	
	CAP (KW)	Sym	Output Speed rpm	Output Torque Kgf.m	SF	Output Speed rpm	Output Torque Kgf.m	SF		CAP-Frame-Ratio	H
15	0.2	02	100	1.9	1.4	120	1.55	1.4	02-8807-15	44	54
					2.0			2.0	02-8808-15	44	54
	0.4	05		3.8	1.9		3.1	1.9	05-8808-15	44	54
					2.62			2.0	05-8809-15	44	54
	0.75	1		7.1	2.0		5.9	2.0	1-8809-15	44	54
					3.65			3.36	1-8810-15	44	54
	1.5	2		14.0	2.1		11.5	2.1	2-8810-15	44	54
					3.23			3.21	2-8811-15	44	54
	2.2	3		20.5	1.4		17.0	1.4	3-8810-15	44	54
					1.7			1.7	3-8811-15	44	54
	3.7	5		35.0	1.0		29.0	1.0	5-8811-15	44	54
					1.6			1.6	5-8812-15	44	54
					2.1			2.1	5-8813-15	44	54
	5.5	8		52.0	1.6		43.0	1.6	8-8813-15	44	54
					2.1			2.1	8-8814-15	44	54
	7.5	10		71.0	1.2		59.0	1.2	10-8813-15	44	54
					1.6			1.6	10-8814-15	44	54
	11	15		105	1.7		87.0	1.7	15-8816-15	44	54
					2.5			2.5	20-8817-15	44	54
	15	20		140	1.5		115	1.5	20-8816-15	44	54
2.0			2.0		20-8817-15	44		54			
18.5	25	175	1.6	145	1.6	25-8817-15	44	54			
			1.75		1.75	25-8818-15	44	56			
22	30	205	1.3	170	1.3	30-8817-15	44	54			
			1.7		1.7	30-8818-15	44	56			
30	40	285	1.3	235	1.3	40-8818-15	44	56			
			1.6		1.6	40-8819-15	44	56			
37	50	350	1.3	290	1.3	50-8819-15	46	56			
			1.6		1.6	50-8820-15	46	56			
45	60	430	1.3	355	1.3	60-8820-15	46	56			
			1.6		1.6	60-8821-15	46	56			
55	75	520	1.3	430	1.3	75-8821-15	46	56			
			1.8		1.8	75-8822-15	46	56			
75	100	715	1.3	590	1.3	100-8822-15	46	56			

성능 및 선정표(4P) 1단 (Selection & Performance table - Single Reduction - 4P)

Ratio	Motor		50 Hz			60 Hz			Model	Dimension Dwg (Page)	
	CAP (KW)	Sym	Output Speed rpm	Output Torque Kgf.m	SF	Output Speed rpm	Output Torque Kgf.m	SF		CAP-Frame-Ratio	H
	17	0.2	02	88	2.15	1.4	106	1.8	1.4	02-8807-17	44
2.0						2.0			02-8808-17	44	54
0.4		05	4.3		1.9	3.55		1.9	05-8808-17	44	54
					2.68			2.72	05-8809-17	44	54
0.75		1	8.1		2.0	6.7		2.0	1-8809-17	44	54
					2.79			2.73	1-8810-17	44	54
1.5		2	16.0		1.6	13.2		1.6	2-8810-17	44	54
					2.1			2.1	2-8811-17	44	54
2.2		3	23.5		1.7	19.5		1.7	3-8811-17	44	54
					1.0			1.0	5-8811-17	44	54
3.7		5	40.0		1.5	33.0		1.5	5-8812-17	44	54
					1.9			1.91	5-8813-17	44	54
					1.5			1.5	8-8813-17	44	54
5.5		8	59.0		1.8	49.0		1.8	8-8814-17	44	54
					1.6			1.6	10-8814-17	44	54
7.5		10	81.0		1.7	67.0		1.7	10-8816-17	44	54
					1.7			1.7	15-8816-17	44	54
11		15	115		1.8	98.0		1.8	15-8817-17	44	54
	1.2			1.2	20-8816-17		44	54			
15	20	160	1.6	132	1.6	20-8817-17	44	54			
			1.3		1.3	25-8817-17	44	54			
18.5	25	200	2.1	165	2.1	25-8818-17	44	56			
			1.7		1.7	30-8818-17	44	56			
22	30	235	1.85	195	1.85	30-8819-17	46	56			
			1.3		1.3	40-8818-17	46	56			
30	40	320	1.6	265	1.6	40-8819-17	46	56			
			1.3		1.3	50-8819-17	46	56			
37	50	400	1.3	330	1.3	50-8819-17	46	56			
21	0.2	02	71	2.6	1.1	86	2.2	1.1	02-8807-21	44	54
					2.4			2.4	02-8808-21	44	54
	0.4	05		5.3	1.3		4.4	1.3	05-8808-21	44	54
					1.9			1.9	05-8809-21	44	54
	0.75	1		10.0	2.0		8.3	2.0	1-8809-21	44	54
					2.69			2.68	1-8810-21	44	54
	1.5	2		20.0	1.5		16.5	1.5	2-8810-21	44	54
					1.8			1.8	2-8811-21	44	54
	2.2	3		29.0	1.8		24.0	1.8	3-8811-21	44	54
					1.0			1.0	5-8811-21	44	54
	3.7	5		49.0	2.0		41.0	2.0	5-8813-21	44	54
					1.3			1.3	8-8813-21	44	54
	5.5	8		73.0	2.0		60.0	2.0	8-8814-21	44	54
					2.0			2.0	10-8816-21	44	54
	7.5	10		100	1.4		83.0	1.4	15-8816-21	44	54
					2.1			2.1	15-8817-21	44	54
	15	20		200	1.6		165	1.6	20-8817-21	44	54
					2			2.0	20-8818-21	44	56
	18.5	25		245	1.3		200	1.3	25-8817-21	44	54
					2.0			2.0	25-8818-21	44	56
	22	30		290	1.7		240	1.7	30-8818-21	44	56
					1.85			1.85	30-8819-21	46	56
	30	40		400	1.6		330	1.6	40-8819-21	46	56
					1.9			1.9	40-8820-21	46	56
37	50	490	1.3	410	1.3	50-8819-21	46	56			
			1.6		1.6	50-8820-21	46	56			
			2.0		2.0	50-8821-21	46	56			
45	60	600	1.3	490	1.3	60-8820-21	46	56			
			1.6		1.6	60-8821-21	46	56			
55	75	730	1.3	605	1.3	75-8821-21	46	56			
			1.7		1.7	75-8822-21	46	56			

성능 및 선정표(4P) 1단 (Selection & Performance table - Single Reduction - 4P)

Ratio	Motor		50 Hz			60 Hz			Model	Dimension Dwg (Page)	
	CAP (KW)	Sym	Output Speed rpm	Output Torque Kgf.m	SF	Output Speed rpm	Output Torque Kgf.m	SF		CAP-Frame-Ratio	H
	25	0.2	02	60	3.1	1.4	72	2.6	1.4	02-8808-25	44
3.75						3.75			02-8809-25	44	54
0.4		05	6.3		2.1	5.2		2.1	05-8809-25	44	54
					1.1			9.8	1.1	1-8809-25	44
0.75		1	11.8		2.2	19.5			1.4	2-8811-25	44
					1.4			1.0	3-8811-25	44	54
1.5		2	23.5		1.0	29.0		1.8	3-8812-25	44	54
					1.8			2.3	3-8813-25	44	54
2.2		3	35.0		1.6	48.5		1.6	5-8813-25	44	54
					1.8			1.8	5-8814-25	44	54
3.7		5	58.5		1.06	72.0		1.06	8-8814-25	44	54
					1.4			1.4	8-8815-25	44	54
5.5		8	87.0		1.8	99.0		2.0	10-8816-25	44	54
					2.0			2.5	10-8817-25	44	54
7.5		10	118		1.3	142		1.3	15-8816-25	44	54
					1.7			1.7	15-8817-25	44	54
11	15	172	2.07	195	2.07	15-8818-25	44	56			
			1.3		1.3	20-8817-25	44	54			
15	20	235	2.0	240	2.0	20-8818-25	44	56			
			1.6		1.6	25-8818-25	44	56			
18.5	25	290	1.9	290	1.9	25-8819-25	46	56			
			1.3		1.3	30-8818-25	44	56			
22	30	350	1.8	395	1.8	30-8819-25	46	56			
			1.3		1.3	40-8819-25	46	56			
30	40	475	1.3								
29	0.2	02	52	3.7	1.4	62	3.0	1.4	02-8808-29	44	54
					3.35			3.4	02-8809-29	44	54
	0.4	05		7.2	1.9		6.0	1.9	05-8809-29	44	54
					2.0			11.0	2.0	1-8810-29	44
	0.75	1		13.5	1.4		22.5		1.4	2-8811-29	44
					1.0			33.5	1.0	3-8811-29	44
	1.5	2		27.5	2.0		56.0		2.0	3-8813-29	44
					1.2			1.2	5-8813-29	44	54
	2.2	3		40.0	1.6		84.0	1.6	5-8814-29	44	54
					1.3			1.3	8-8815-29	44	54
	3.7	5		68.0	2.0		112	2.0	8-8816-29	44	54
					1.5			1.5	10-8816-29	44	54
	5.5	8		100	1.91		167	1.91	10-8817-29	44	54
					1.7			1.7	15-8817-29	44	54
	7.5	10		136	1.75		225	1.75	15-8818-29	44	56
					1.6			1.6	20-8818-29	44	56
11	15	200	2.01	280	2.0	20-8819-29	44	56			
			1.3		1.3	25-8818-29	44	56			
15	20	275	2.0	335	2.0	25-8819-29	46	56			
			1.7		1.7	30-8819-29	46	56			
18.5	25	340	2.0	455	2.0	30-8820-29	46	56			
			1.2		1.2	40-8819-29	46	56			
22	30	405	1.5	565	1.5	40-8820-29	46	56			
			1.9		1.9	40-8821-29	46	56			
30	40	550	1.0	685	1.0	50-8819-29	46	56			
			1.5		1.5	50-8821-29	46	56			
37	50	680	1.3	840	1.3	60-8821-29	46	56			
			1.6		1.6	60-8822-29	46	56			
45	60	830	1.3		1.3	75-8822-29	46	56			
			1.6								
55	75	1015	1.3								

성능 및 선정표(4P) 1단 (Selection & Performance table - Single Reduction - 4P)

Ratio	Motor		50 Hz			60 Hz			Model	Dimension Dwg (Page)	
	CAP (KW)	Sym	Output Speed rpm	Output Torque Kgf.m	SF	Output Speed rpm	Output Torque Kgf.m	SF		CAP-Frame-Ratio	H
35	0.2	02	43	4.4	1.4	51	3.7	1.4	02-8808-35	44	54
					2.9			2.9	02-8809-35	44	54
	0.4	05		8.9	1.9		7.3	1.9	05-8809-35	44	54
					2.55			2.58	05-8810-35	44	54
	0.75	1		16.5	1.6		13.5	1.6	1-8810-35	44	54
					2.0			2.0	1-8811-35	44	54
	1.5	2		33.0	1.2		27.5	1.2	2-8811-35	44	54
					2.1			2.1	2-8812-35	44	54
	2.2	3		49.0	1.0		40.5	1.0	3-8811-35	44	54
					1.9			1.9	3-8813-35	44	54
	3.7	5		82.0	1.0		68.0	1.0	5-8813-35	44	54
					1.4			1.4	5-8814-35	44	54
					2.0			2.0	5-8815-35	44	54
	5.5	8		120	2.0		100	2.0	8-8816-35	44	54
					2.1			2.1	8-8817-35	44	54
	7.5	10		165	1.5		137	1.5	10-8816-35	44	54
2.0			2.0		10-8817-35	44		54			
11	15	242	1.3	201	1.3	15-8817-35	44	54			
			2.0		2.0	15-8818-35	44	56			
15	20	332	1.5	275	1.5	20-8818-35	44	56			
			2.0		2.0	20-8819-35	46	56			
18.5	25	410	1.2	340	1.2	25-8818-35	44	56			
			1.6		1.6	25-8819-35	46	56			
22	30	490	1.3	405	1.3	30-8819-35	46	56			
43	0.2	02	35	5.4	1.1	42	4.5	1.1	02-8808-43	44	54
					2.5			2.45	02-8809-43	44	54
	0.4	05		11.0	1.5		9.0	1.5	05-8809-43	44	54
					1.95			1.95	05-8810-43	44	54
	0.75	1		20.5	1.4		16.8	1.4	1-8810-43	44	54
					2.0			2.0	1-8811-43	44	54
	1.5	2		41.0	1.0		34.0	1.0	2-8811-43	44	54
					1.97			1.97	2-8813-43	44	54
	2.2	3		60.0	1.7		49.0	1.7	3-8813-43	44	54
					1.8			1.8	3-8814-43	44	54
	3.7	5		100	1.4		84.0	1.4	5-8814-43	44	54
					2.1			2.1	5-8816-43	44	54
	5.5	8		150	1.4		124	1.4	8-8816-43	44	54
					2.0			2.0	8-8817-43	44	54
	7.5	10		205	1.5		168	1.5	10-8817-43	44	54
					2.0			2.0	10-8818-43	44	56
11	15	300	1.7	248	1.7	15-8818-43	44	56			
			1.9		1.9	15-8819-43	46	56			
15	20	410	1.2	340	1.2	20-8818-43	44	56			
			2.0		2.0	20-8819-43	46	56			
18.5	25	505	1.6	418	1.6	25-8819-43	46	56			
			1.7		1.7	25-8820-43	46	56			
22	30	600	1.4	498	1.4	30-8820-43	46	56			
			2.0		2.0	30-8821-43	46	56			
30	40	820	1.5	680	1.5	40-8821-43	46	56			
			1.8		1.8	40-8822-43	46	56			
37	50	1006	1.2	840	1.2	50-8821-43	46	56			
			1.5		1.5	50-8822-43	46	56			
45	60	1225	1.0	1015	1.0	60-8821-43	46	56			

성능 및 선정표(4P) 1단 (Selection & Performance table - Single Reduction - 4P)

Ratio	Motor		50 Hz			60 Hz			Model	Dimension Dwg (Page)	
	CAP (KW)	Sym	Output Speed rpm	Output Torque Kgf.m	SF	Output Speed rpm	Output Torque Kgf.m	SF		CAP-Frame-Ratio	H
	51	0.2	02	29	6.5	1.6	35	5.3	1.6		02-8809-51
0.4		05	12.8		1.9	10.7		1.9	05-8810-51	44	54
0.75		1	24.2		1.4	20.0		1.4	1-8811-51	44	54
1.5		2	48.5		1.5	40.2		1.5	2-8812-51	44	54
					1.9			1.9	2-8813-51	44	54
2.2		3	71.0		1.3	59.0		1.3	3-8813-51	44	54
					1.5			1.5	3-8814-51	44	54
					1.9			1.9	3-8815-51	44	54
					2.59			2.58	3-8816-51	44	54
3.7		5	118		2.0	99.0		2.0	5-8816-51	44	54
					2.25			2.86	5-8817-51	44	54
5.5		7.5	176		1.3	146		1.3	8-8816-51	44	54
					2.0			2.0	8-8817-51	44	54
7.5		10	242		1.5	200		1.5	10-8817-51	44	54
					2.0			2.0	10-8818-51	44	56
11	15	355	1.3	293	1.3	15-8818-51	44	56			
			1.9		1.9	15-8819-51	46	56			
15	20	485	1.3	402	1.3	20-8819-51	46	56			
59	0.2	02	25	7.5	1.8	31	6.2	1.8	02-8809-59	44	54
	0.4	04		15.0	1.7		12.3	1.7	05-8810-59	44	54
					2.1			2.1	05-8811-59	44	54
	0.75	1		28.0	1.3		23.2	1.3	1-8811-59	44	54
	1.5	2		56.0	1.6		46.5	1.6	2-8813-59	44	54
					1.9			1.9	2-8814-59	44	54
	2.2	3		82.0	1.1		68.5	1.1	3-8813-59	44	54
					1.6			1.6	3-8814-59	44	54
					2.0			2.0	3-8816-59	44	54
	3.7	5		137	1.5		113	1.5	5-8816-59	44	54
					1.9			1.9	5-8817-59	44	54
	5.5	8		205	1.5		170	1.5	8-8817-59	44	54
					1.75			1.75	8-8818-59	44	56
	7.5	10		280	1.31		232	1.3	10-8818-59	44	56
					2.07			2.07	10-8819-59	46	56
	11	15		412	1.7		342	1.7	15-8819-59	46	56
					2.0			2.0	15-8820-59	46	56
	15	20		560	1.3		700	1.3	20-8820-59	46	56
1.8			1.8		20-8821-59	46		56			
18.5	25	692	1.5	575	1.5	25-8820-59	46	56			
			1.9		1.98	25-8821-59	46	56			
22	30	826	1.7	684	1.7	30-8821-59	46	56			
			2.0		2.0	30-8822-59	46	56			
30	40	1125	1.5	930	1.5	40-8822-59	46	56			

성능 및 선정표(4P) 1단 (Selection & Performance table - Single Reduction - 4P)

Ratio	Motor		50 Hz			60 Hz			Model	Dimension Dwg (Page)	
	CAP (KW)	Sym	Output Speed rpm	Output Torque Kgf.m	SF	Output Speed rpm	Output Torque Kgf.m	SF		CAP-Frame-Ratio	H
	71	0.2	02	21	9.0	1.5	25	7.5	1.5		02-8809-71
2.45						2.45			02-8810-71	44	54
0.4		05	18.0		1.4	15.0		1.4	05-8810-71	44	54
					1.9			1.9	05-8811-71	44	54
0.75		1	34.0		1.0	28.0		1.0	1-8811-71	44	54
					1.6			1.6	1-8812-71	44	54
					2.4			2.43	1-8813-71	44	54
					1.4			56.1	1.4	2-8813-71	44
1.6		1.6	2-8814-71		44	54					
2.2		3	99.3		1.3	82.2		1.3	3-8815-71	44	54
					2.5			2.5	3-8816-71	44	54
3.7		5	165		1.5	137		1.5	5-8816-71	44	54
					1.9			1.9	5-8817-71	44	54
5.5		8	246		1.3	203		1.3	8-8817-71	44	54
					1.7			1.7	8-8818-71	44	56
7.5		10	337		1.3	278		1.3	10-8818-71	44	56
	1.79			1.79	10-8819-71		46	56			
11	15	495	1.4	410	1.4	15-8819-71	46	56			
87	0.2	02	17	11.0	1.5	21	9.0	1.5	02-8809-87	44	54
					2.45			2.45	02-8810-87	44	54
	0.4	05		22.0	1.6		18.2	1.6	05-8810-87	44	54
					1.9			1.9	05-8811-87	44	54
	0.75	1		41.3	1.0		34.2	1.0	1-8811-87	44	54
					1.9			1.9	1-8813-87	44	54
	1.5	2		83.0	1.3		68.7	1.31	2-8813-87	44	54
					1.6			1.6	2-8814-87	44	54
					2.23			2.23	2-8816-87	44	54
	2.2	3		120	1.7		99.8	1.7	3-8816-87	44	54
					2.2			2.2	3-8817-87	44	54
	3.7	5		203	1.5		168	1.5	5-8817-87	44	54
					1.9			1.9	5-8818-87	44	56
	5.5	8		302	1.5		251	1.5	8-8818-87	44	56
					2.13			2.13	8-8819-87	46	56
	7.5	10		413	1.1		343	1.1	10-8818-87	46	56
1.8			1.8		10-8819-87	46		56			
11	15	607	1.2	503	1.2	15-8819-87	46	56			
			1.4		1.4	15-8820-87	46	56			
			1.9		1.9	15-8821-87	46	56			
15	23	830	1.4	687	1.4	20-8821-87	46	56			
			1.7		1.7	20-8822-87	46	56			
18.5	25	1025	1.4	846	1.4	25-8822-87	46	56			
119	0.2	02	13	14.6	1.25	15	12.2	1.2	02-8810-119	44	54

성능 및 선정표(4P)2단 (Selection & Performance table - Double Reduction - 4P)

Ratio	Motor		50 Hz			60 Hz			Model	Dimension Dwg (Page)	
	CAP (KW)	Sym	Output Speed rpm	Output Torque Kgf.m	SF	Output Speed rpm	Output Torque Kgf.m	SF		CAP-Frame-Ratio	H
104 (13x8)	0.2	02	14	12.5	1.9	17	10.3	1.9	02-8809/08-104	48	60
					2.1			2.1	02-8810/08-104	48	60
	0.4	05		25.0	1.0		20.6	1.06	05-8810/08-104	48	60
					1.6			1.6	05-8811/08-104	48	60
					2.1			2.42	05-8812/09-104	48	60
	0.75	1		47.0	1.6		39.0	1.6	1-8812/09-104	48	60
					1.8			2.16	1-8813/10-104	48	60
	1.5	2		94.2	1.0		78.0	1.08	2-8813/10-104	48	60
					1.9			2.2	2-8816/10-104	48	60
	2.2	3		136	1.2		113	1.2	3-8814/10-104	48	60
					1.8			1.8	3-8816/10-104	48	60
					2.2			2.2	3-8817/11-104	48	60
	3.7	5		230	1.5		190	1.1	5-8816/11-104	48	60
					1.6			1.6	5-8817/11-104	50	60
	5.5	8		343	1.1		283	1.1	8-8817/11-104	50	60
					1.7			1.7	8-8818/13-104	50	62
	7.5	10		470	1.2		390	1.2	10-8818/13-104	50	62
					1.5			1.5	10-8819/13-104	50	62
121 (11x11)	0.2	02	12	14.3	1.3	15	12.0	1.3	02-8809/08-121	48	60
					2.1			2.1	02-8810/08-121	48	60
	0.4	05		29.0	1.0		24.0	1.0	05-8810/08-121	48	60
					1.6			1.6	05-8811/08-121	48	60
					2.2			2.2	05-8812/09-121	48	60
	0.75	1		54.5	1.4		45.3	1.4	1-8812/09-121	48	60
					2.1			2.1	1-8813/09-121	48	60
	1.5	2		109	1.0		90.5	1.0	2-8813/10-121	48	60
					1.1			1.1	2-8814/10-121	48	60
					2.2			2.2	2-8816/10-121	48	60
	2.2	3		160	1.0		130	1.0	3-8814/10-121	48	60
					1.3			1.5	3-8816/11-121	48	60
					2.4			2.4	3-8817/11-121	50	60
	3.7	5		270	1.0		220	1.0	5-8816/11-121	50	60
					1.4			1.4	5-8817/11-121	50	60
					2.1			2.1	5-8818/13-121	50	62
	5.5	8		400	1.0		330	1.0	8-8817/11-121	50	62
					1.4			1.4	8-8818/13-121	50	62
					2.1			2.1	8-8819/13-121	50	62
	7.5	10		545	1.4		453	1.5	10-8819/13-121	50	62
					1.7			1.8	10-8820/13-121	50	62
					2.2			2.5	10-8821/16-121	50	62
	11	15		802	1.4		663	1.7	15-8821/16-121	50	62
					1.7			2.0	15-8822/17-121	52	64
	15	20		1100	1.2		906	1.3	20-8822/17-121	52	64
					1.5			1.6	20-8823/16-121	52	64
					1.9			2.3	20-8824/18-121	52	64
	18.5	25		1340	1.1		1115	1.2	25-8822/17-121	52	64
					1.3			1.3	25-8823/18-121	52	64
					1.5			1.6	25-8824/18-121	52	64
2.1			2.2		28-8825/19-121	52		64			
22	30	1600	1.1	1320	1.1	30-8823/18-121	52	64			
			1.5		1.5	30-8824/18-121	52	64			
			1.9		2.1	30-8825/19-121	52	64			
30	40	2180	1.0	1810	1.10	40-8825/19-121	52	64			
			1.4		1.6	40-8826/19-121	52	64			
37	50	2700	1.0	2230	1.2	50-8825/19-121	52	64			

성능 및 선정표(4P)2단 (Selection & Performance table - Double Reduction - 4P)

Ratio	Motor		50 Hz			60 Hz			Model	Dimension Dwg (Page)	
	CAP (KW)	Sym	Output Speed rpm	Output Torque Kgf.m	SF	Output Speed rpm	Output Torque Kgf.m	SF		CAP-Frame-Ratio	H
143 (13x11)	0.2	02	10	17.2	1.0	13	14.2	1.05	02-8809/08-143	48	60
					1.4			1.4	02-8810/08-143	48	60
	0.4	05		34.3	1.0		28.3	1.0	05-8811/08-143	48	60
					1.8			2.2	05-8812/09-143	48	60
	0.75	1		64.5	1.2		53.5	1.2	1-8811/09-143	48	60
					1.7			1.7	1-8813/09-143	48	60
	1.5	2		128	1.0		105	1.0	2-8813/10-143	48	60
					1.0			1.04	2-8814/10-143	48	60
					1.56			1.84	2-8816/10-143	48	60
	2.2	3		188	1.06		156	1.25	3-8816/10-143	48	60
					1.06			1.27	3-8816/11-143	48	60
					1.62			1.92	3-8817/11-143	50	60
	3.7	5		317	1.0		263	1.0	5-8816/11-143	50	60
					1.0			1.2	5-8817/11-143	50	60
					1.5			1.8	5-8818/13-143	50	62
	5.5	8		473	1.0		392	1.2	8-8818/13-143	50	62
					1.6			1.9	8-8819/13-143	50	62
	7.5	10		645	1.2		535	1.4	10-8819/13-143	50	62
165 (15x11)	0.2	02	9.1	19.6	1.0	11	16.3	1.2	02-8809/08-165	48	60
					1.5			1.8	02-8810/08-165	48	60
	0.4	05		39.5	1.0		32.5	1.0	05-8810/08-165	48	60
					1.0			1.0	05-8811/08-165	48	60
	0.75	1		74.5	1.7		61.5	1.9	05-8812/09-165	48	60
					1.0			1.0	1-8811/09-165	48	60
					1.2			1.5	1-8813/09-165	48	60
	1.5	2		148	1.6		122	2.0	1-8814/09-165	48	60
					1.0			1.0	2-8813/10-165	48	60
					1.0			1.0	2-8814/10-165	48	60
	2.2	3		218	1.35		180	1.61	2-8816/10-165	48	60
					1.0			1.10	3-8816/10-165	48	60
					1.4			1.5	3-8817/10-165	48	60
	3.7	5		360	1.9		303	2.2	3-8818/11-165	50	60
					1.0			1.0	5-8817/11-165	50	60
					1.3			1.6	5-8818/13-165	50	62
	5.5	8		545	1.8		453	2.1	5-8819/13-165	50	62
					1.0			1.0	8-8818/13-165	50	62
					1.5			1.7	8-8819/13-165	50	62
	7.5	10		745	1.1		615	1.3	10-8819/13-165	50	62
					1.4			1.5	10-8820/13-165	50	62
					1.7			2.0	10-8821/13-165	50	62
					1.0			1.03	15-8821/16-165	50	62
	11	15		1090	1.3		905	1.6	15-8822/17-165	50	64
					1.8			2.2	15-8823/16-165	52	64
					1.0			1.0	20-8822/17-165	52	64
	15	20		1490	1.4		1235	1.6	20-8823/16-165	52	64
					1.8			2.1	20-8824/16-165	52	64
					1.0			1.3	25-8823/18-165	52	64
	18.5	25		1830	1.3		1520	1.4	25-8824/18-165	52	64
					1.7			2.0	25-8825/19-165	52	64
					1.0			1.1	30-8823/18-165	52	64
	22	30		2180	1.1		1810	1.10	30-8824/18-165	52	64
					1.4			1.7	30-8825/19-165	52	64
					2.0			2.3	30-8826/19-165	52	64
					1.0			1.2	40-8825/19-165	52	64
30	40	2980	1.4	2470	1.6	40-8826/19-165	52	64			
			1.2		1.3	50-8826/19-165	52	64			
37	50	3680	1.2	3050	1.3	50-8826/19-165	52	64			

성능 및 선정표(4P)2단 (Selection & Performance table - Double Reduction - 4P)

Ratio	Motor		50 Hz			60 Hz			Model	Dimension Dwg (Page)		
	CAP (KW)	Sym	Output Speed rpm	Output Torque Kgf.m	SF	Output Speed rpm	Output Torque Kgf.m	SF		CAP-Frame-Ratio	H	V
195 (15x13)	0.2	02	7.7	23.5	1.20	9.2	19.3	1.45	02-8810/08-195	48	60	
					2.00			2.00	02-8811/08-195	48	60	
	0.4	05		47	1.0		39	1.0	05-8810/08-195	48	60	
					1.00				1.00	05-8811/08-195	48	60
					1.20				1.42	05-8811/09-195	48	60
					1.72				2.18	05-8813/09-195	48	60
	0.75	1		88	1.0		73	1.0	1-8811/09-195	48	60	
					1.0				1.3	1-8813/09-195	48	60
					1.5				1.8	1-8814/10-195	48	60
	1.5	2		176	1.0		145	1.0	2-8814/10-195	48	60	
					1.1				1.1	2-8816/10-195	48	60
					1.8				2.0	2-8817/10-195	48	60
	2.2	3		257	1.0		213	1.0	3-8816/10-195	48	60	
					1.3				1.5	3-8817/10-195	48	60
					1.3				1.5	3-8817/11-195	50	60
					1.9				2.10	3-8818/13-195	50	62
	3.7	5		433	1.0		358	1.0	5-8817/11-195	50	60	
					1.1				1.25	5-8818/13-195	50	62
					1.8				2.2	5-8819/11-195	50	62
	5.5	8		645	1.0		535	1.0	8-8818/13-195	50	62	
					1.0				1.1	8-8819/13-195	50	62
					1.4				1.7	8-8820/13-195	50	62
					1.9				2.1	8-8821/13-195	50	62
	7.5	10		882	1.0		730	1.0	10-8819/13-195	50	62	
					1.0				1.2	10-8820/13-195	50	62
					1.4				1.5	10-8821/13-195	50	62
					1.6				2.0	10-8822/13-195	52	64
	11	15		1290	1.0		1060	1.0	15-8821/16-195	50	62	
1.1			1.3		15-8822/17-195	52			64			
1.5			1.8		15-8823/16-195	52			64			
2.0			2.1		15-8824/16-195	52			64			
15	20	1760	1.0	1450	1.0	20-8822/17-195	52	64				
			1.1			1.3	20-8823/16-195	52	64			
			1.5			1.5	20-8824/16-195	52	64			
			1.8			2.1	25-8825/17-195	52	64			
18.5	25	2170	1.10	1800	1.2	25-8824/18-195	52	64				
			1.4			1.7	25-8825/17-195	52	64			
			2.0			2.4	30-8826/19-195	52	64			
22	30	2580	1.0	2140	1.0	30-8824/18-195	52	64				
			1.4			1.5	30-8825/17-195	52	64			
			1.7			2.0	30-8826/19-195	52	64			
30	40	3520	1.2	2920	1.5	40-8826/19-195	52	64				

성능 및 선정표(4P)2단 (Selection & Performance table - Double Reduction - 4P)

Ratio	Motor		50 Hz			60 Hz			Model	Dimension Dwg (Page)	
	CAP (KW)	Sym	Output Speed rpm	Output Torque Kgf.m	SF	Output Speed rpm	Output Torque Kgf.m	SF		CAP-Frame-Ratio	H
231 (21x11)	0.2	02	6.5	27.6	1.1	7.8	23.0	1.3	02-8810/08-231	48	60
					1.6			1.8	02-8811/08-231	48	60
	0.4	05		55.3	1.01		46.1	1.02	05-8811/08-231	48	60
					1.7			2.0	05-8813/09-231	48	60
	0.75	1		102	1.0		86	1.1	1-8813/09-231	48	60
					1.1			1.4	1-8814/09-231	48	60
					2.0			2.1	1-8816/09-231	48	60
	1.5	2		207	1.0		170	1.0	2-8816/10-231	48	60
					1.5			1.8	2-8817/10-231	48	60
	2.2	3		305	1.00		253	1.20	3-8817/10-231	48	60
					1.6			2.0	3-8818/10-231	50	62
					2.1			2.5	3-8819/13-231	50	62
	3.7	5		513	0.9		425	1.1	5-8818/13-231	50	62
					1.5			1.6	5-8819/11-231	50	62
					1.8			2.2	5-8820/13-231	50	62
	5.5	8		765	1.0		633	1.1	8-8819/13-231	50	62
					1.1			1.26	8-8820/13-231	50	62
					1.6			2.0	8-8821/13-231	50	62
	7.5	10		1048	0.9		865	1.0	10-8820/13-231	50	62
					1.2			1.4	10-8821/13-231	50	62
					1.4			1.5	10-8822/13-231	52	64
	11	15		1535	0.9		1265	1.0	15-8821/16-231	50	62
					1.0			1.08	15-8822/17-231	52	64
					1.2			1.5	15-8823/16-231	52	64
1.7			2.0		15-8824/16-231	52		64			
15	20	2085	0.9	1725	1.1	20-8823/16-231	52	64			
			1.2		1.5	20-8824/16-231	52	64			
			1.5		1.8	20-8825/17-231	52	64			
18.5	25	2575	0.9	2135	1.2	25-8824/18-231	52	64			
			1.14		1.36	25-8825/17-231	52	64			
			1.8		2.1	25-8826/19-231	52	64			
22	30	3065	0.8	2535	1.0	30-8824/18-231	52	64			
			1.0		1.2	30-8825/17-231	52	64			
			1.5		1.8	30-8826/19-231	52	64			
30	40	4185	0.9	3465	1.0	40-8825/19-231	52	64			
			1.2		1.3	40-8826/19-231	52	64			
37	50	5150	1.0	4270	1.1	50-8826/19-231	52	64			

성능 및 선정표(4P)2단 (Selection & Performance table - Double Reduction - 4P)

Ratio	Motor		50 Hz			60 Hz			Model	Dimension Dwg (Page)	
	CAP (KW)	Sym	Output Speed rpm	Output Torque Kgf.m	SF	Output Speed rpm	Output Torque Kgf.m	SF		CAP-Frame-Ratio	H
	273 (21x13)	0.2	02	5.5	32.5	1.0	6.6	27	1.1	02-8810/08-273	48
1.9						2.00			02-8811/08-273		
0.4		05	65		1.0	54.2		1.00	05-8811/08-273	48	60
					1.4			1.7	05-8813/09-273	48	60
0.75		1	123		1.0	102		1.0	1-8813/09-273	48	60
					1.2			1.3	1-8814/10-273	48	60
					1.64			1.96	1-8816/10-273	48	60
1.5		2	245		1.0	203		1.0	2-8816/10-273	48	60
					1.3			1.5	2-8817/10-273	48	60
					2.0			2.1	2-8818/10-273	48	60
2.2		3	360	1.0	300	1.02	3-8817/10-273	48	60		
				1.3		1.5	3-8818/10-273	50	62		
				1.9		2.0	3-8819/13-273	50	62		
3.7		5	607	0.8	503	1.0	5-8818/13-273	50	62		
				1.3		1.6	5-8819/11-273	50	62		
				2.0		2.4	5-8821/13-273	50	62		
5.5		8	903	1.0	750	1.07	8-8819/13-273	50	62		
				1.4		1.7	8-8821/13-273	50	62		
				1.55		2.0	8-8822/13-273	52	64		
7.5		10	1235	1.0	1025	1.2	10-8821/13-273	52	62		
	1.2			1.36		10-8822/17-273	52	64			
	1.6			1.8		10-8823/16-273	50	64			
11	15	1805	0.9	1495	1.0	15-8822/17-273	52	64			
			1.1		1.2	15-8823/16-273	52	64			
			1.5		1.7	15-8824/16-273	52	64			
15	20	2465	1.0	2045	1.2	20-8824/16-273	52	64			
			1.4		1.6	20-8825/17-273	52	64			
			1.9		2.2	20-8826/19-273	52	64			
18.5	25	3045	1.0	2525	1.2	25-8825/17-273	52	64			
			1.5		1.8	25-8826/19-273	52	64			
22	30	3625	0.9	3006	1.0	30-8825/17-273	52	64			
			1.3		1.5	30-8826/19-273	52	64			
30	40	4940	0.9	4000	1.1	40-8826/19-273	52	64			
319 (29x11)	0.2	02	4.7	38	1.0	5.6	31	1.0	02-8810/08-319	48	60
					1.45			1.75			
	0.4	05		77	1.0		63	1.0	05-8811/08-319	48	60
					1.10			1.32	05-8813/09-319	48	60
	0.75	1		143	1.6		118	1.9	05-8814/09-319	48	60
					1.0			1.0	1-8813/09-319	48	60
					1.0			1.1	1-8814/09-319	48	60
	1.5	2		286	1.5		238	1.7	1-8816/09-319	48	60
					1.0			1.0	2-8817/10-319	48	60
					1.7			2.0	2-8818/10-319	50	62
	2.2	3	422	1.0	348	1.0	3-8817/11-319	50	60		
				1.2		1.4	3-8818/10-319	50	62		
				1.2		1.4	3-8818/13-319	50	62		
	3.7	5	710	1.9	589	2.2	3-8819/11-319	50	62		
				0.9		1.0	5-8818/13-319	50	62		
				1.1		1.3	5-8819/13-319	50	62		
	5.5	8	1055	1.8	875	2.1	5-8821/13-319	50	62		
				0.9		1.0	8-8819/13-319	50	62		
				1.2		1.4	8-8821/13-319	50	62		
	7.5	10	1446	1.5	1200	1.7	8-8822/13-319	52	64		
0.9				1.0		10-8821/13-319	50	64			
1.1				1.2		10-8822/13-319	52	64			
11	15	2115	1.4	1755	1.6	10-8823/16-319	52	62			
			0.9		1.1	15-8823/16-319	52	62			
			1.2		1.5	15-8824/16-319	52	62			
15	20	2885	1.5	2395	1.8	15-8825/17-319	52	62			
			0.9		1.1	20-8824/16-319	52	62			
			1.1		1.3	20-8825/17-319	52	62			
18.5	25	3565	1.6	2945	1.9	20-8826/19-319	52	62			
			0.9		1.1	25-8825/17-319	52	62			
			1.3		1.5	25-8826/19-319	52	62			
22	30	4235	1.9	3505	2.2	25-8827/19-319	52	62			
			1.1		1.3	30-8826/19-319	52	62			
30	40	5770	1.6	4780	1.9	30-8827/19-319	52	62			
			1.2		1.4	40-8827/19-319	52	62			
37	50	7120	1.0	5900	1.1	50-8827/19-319	52	62			

성능 및 선정표(4P)2단 (Selection & Performance table - Double Reduction - 4P)

Ratio	Motor		50 Hz			60 Hz			Model	Dimension Dwg (Page)	
	CAP (KW)	Sym	Output Speed rpm	Output Torque Kgf.m	SF	Output Speed rpm	Output Torque Kgf.m	SF		CAP-Frame-Ratio	H
377 (29x13)	0.2	02	4	45	1.0	4.8	37	1.0	02-8810/08-377	48	58
					1.25			1.50	02-8811/08-377	48	58
	0.4	05		91	1.05		75	1.1	05-8813/09-377	48	58
					1.45			1.8	05-8814/09-377	48	58
	0.75	1		171	0.8		142	0.9	1-8814/09-377	48	58
					1.2			1.5	1-8816/09-377	48	58
					1.8			2.1	1-8817/10-377	48	58
	1.5	2		340	0.8		280	0.9	2-8816/10-377	48	58
					0.9			1.08	2-8817/10-377	48	58
					1.45			1.8	2-8818/10-377	50	60
	2.2	3		500	1.0		410	1.2	3-8818/10-377	50	60
					1.61			1.93	3-8819/13-377	50	60
	3.7	5		840	1.0		695	1.15	5-8819/13-377	50	60
					1.5			1.8	5-8821/13-377	50	60
	5.5	8		1240	1.0		1030	1.2	8-8821/13-377	50	60
					1.12			1.32	8-8822/17-377	52	62
					1.5			1.8	8-8823/16-377	52	62
	7.5	10		1700	0.9		1410	1.0	10-8822/17-377	52	62
					1.1			1.3	10-8823/16-377	52	62
					1.5			1.8	10-8824/16-377	52	62
	11	15		2500	1.0		2070	1.0	15-8823/16-377	52	62
					1.0			1.2	15-8824/16-377	52	62
					1.3			1.5	15-8825/17-377	52	62
					1.8			2.2	15-8826/19-377	52	62
15	20	3410	1.0	2820	1.1	20-8825/17-377	52	62			
			1.3		1.6	20-8826/19-377	52	62			
			2.0		2.4	20-8827/19-377	52	62			
18.5	25	4200	1.1	3480	1.3	25-8826/19-377	52	62			
			1.6		1.9	25-8827/19-377	52	62			
22	30	5000	1.0	4140	1.1	30-8826/19-377	52	62			
			1.35		1.6	30-8827/19-377	52	62			
30	40	6820	1.0	5650	1.2	40-8827/19-377	52	62			

성능 및 선정표(4P)2단 (Selection & Performance table - Double Reduction - 4P)

Ratio	Motor		50 Hz			60 Hz			Model	Dimension	
	CAP (KW)	Sym	Output Speed rpm	Output Torque Kgf.m	SF	Output Speed rpm	Output Torque Kgf.m	SF		CAP-Frame-Ratio	H
									Dwg (Page)		
473 (43x11)	0.2	02	3.2	57	1.00	3.8	47	1.20	02-8811/08 -473	48	60
					1.6			2.0	02-8813/08 -473	48	60
	0.4	05		113	0.9		94	1.0	05-8813/08 -473	48	60
					1.0			1.0	05-8814/09 -473	48	60
					1.8			2.12	05-8816/09 -473	48	60
	0.75	1		214	1.0		176	1.0	1-8814/09 -473	48	60
					1.0			1.2	1-8816/09 -473	48	60
					1.5			1.8	1-8817/09 -473	48	60
	1.5	2		427	1.0		353	1.0	2-8817/10 -473	48	60
					1.1			1.4	2-8818/10 -473	50	62
					1.8			2.2	2-8819/11 -473	50	62
	2.2	3		625	0.8		520	1.0	3-8818/10 -473	50	62
			1.2		1.5	3-8819/11 -473		50	62		
			1.5		1.8	3-8820/13 -473		50	62		
	3.7	5	1050	0.8	875	0.9	5-8820/13 -473	50	62		
				1.2		1.4	5-8821/13 -473	50	62		
				1.50		1.8	5-8822/13 -473	52	64		
	5.5	8	1560	0.8	1300	1.0	8-8821/13 -473	50	62		
				1.0		1.20	8-8822/13 -473	52	64		
				1.3		1.6	8-8823/16 -473	52	64		
	7.5	10	2130	1.0	1770	1.1	10-8823/16 -473	52	64		
				1.2		1.4	10-8824/16 -473	52	64		
				1.5		1.9	10-8825/17 -473	52	64		
	11	15	3130	0.8	2600	1.0	15-8824/16 -473	52	64		
				1.1		1.3	15-8825/17 -473	52	64		
				1.4		1.8	15-8826/19 -473	52	64		
	15	20	4280	0.8	3540	1.0	20-8825/17 -473	52	64		
				1.07		1.3	20-8826/19 -473	52	64		
1.6				1.9		20-8827/19 -473	52	64			
18.5	25	5250	0.9	4350	1.00	25-8826/19 -473	52	64			
			1.3		1.5	25-8827/19 -473	52	64			
22	30	6250	1.08	5200	1.21	30-8827/19 -473	52	64			
30	40	8550	0.8	7100	1.0	40-8827/19 -473	52	64			

성능 및 선정표(4P)2단 (Selection & Performance table - Double Reduction - 4P)

Ratio	Motor		50 Hz			60 Hz			Model	Dimension Dwg (Page)	
	CAP (KW)	Sym	Output Speed rpm	Output Torque Kgf.m	SF	Output Speed rpm	Output Torque Kgf.m	SF		CAP-Frame-Ratio	H
559 (43x13)	0.2	02	2.7	67	1.0	3.2	56	1.0	02-8811/08-559	48	60
					1.4			1.7	02-8813/08-559	48	60
	0.4	05		132	1.0		110	1.0	05-8814/08-559	48	60
					1.50			1.9	05-8816/09-559	48	60
	0.75	1		250	1.0		205	1.0	1-8816/09-559	48	60
					1.21			1.5	1-8817/09-559	48	60
					2.0			2.4	1-8818/10-559	50	62
	1.5	2		505	1.0		415	1.0	2-8817/10-559	48	60
					1.05			1.2	2-8818/10-559	50	62
					1.6			1.9	2-8819/11-559	50	62
	2.2	3	740	1.09	610	1.30	3-8819/13-559	50	62		
				1.7		2.0	3-8821/13-559	50	62		
	3.7	5	1240	1.0	1030	1.20	5-8821/13-559	50	62		
				1.3		1.52	5-8822/13-559	52	64		
	5.5	8	1850	0.8	1530	1.02	8-8822/13-559	52	64		
				1.1		1.30	8-8823/16-559	52	64		
				1.40		1.7	8-8824/16-559	52	64		
	7.5	10	2520	0.8	2100	1.0	10-8823/16-559	52	64		
				1.02		1.24	10-8824/16-559	52	64		
				1.33		1.6	10-8825/17-559	52	64		
11	15	3700	1.0	3060	1.1	15-8825/17-559	52	64			
			1.23		1.5	15-8826/19-559	52	64			
			1.83		2.2	15-8827/19-559	52	64			
15	20	5050	1.0	4150	1.07	20-8826/19-559	52	64			
			1.34		1.60	20-8827/19-559	52	64			
18.5	25	6230	1.09	5150	1.30	25-8827/19-559	52	64			
22	30	8620	1.0	6150	1.1	30-8827/19-559	52	64			
649 (59x11)	0.2	02	2.3	78	1.0	2.8	65	1.0	02-8811/08-649	48	60
					1.10			1.4	02-8813/08-649	48	60
	0.4	05		155	1.7		125	2.1	02-8814/08-649	48	60
					0.9			1.0	05-8813/08-649	48	60
	0.75	1		290	1.0		240	1.0	05-8814/08-649	48	60
					1.4			1.6	05-8816/09-649	48	60
	1.5	2		585	1.0		485	1.0	1-8816/09-649	48	60
					1.04			1.3	1-8817/09-649	48	60
					1.7			2.0	1-8818/10-649	50	62
	2.2	3		860	1.0		710	1.0	2-8818/10-649	50	62
			1.3		1.6	2-8819/11-649		50	62		
			1.10		1.0	3-8819/11-649		50	62		
	3.7	5	1430	1.44	1150	1.3	3-8820/13-649	50	62		
				0.9		1.8	3-8821/13-649	50	62		
				1.10		1.04	5-8821/13-649	50	62		
	5.5	8	2130	1.4	1760	1.31	5-8822/13-649	52	64		
				1.0		1.7	5-8823/16-649	52	64		
				1.20		1.0	8-8822/13-649	52	64		
	7.5	10	2930	1.6	2430	1.1	8-8823/16-649	52	64		
				0.9		1.41	8-8824/16-649	52	64		
1.2				1.9		8-8825/17-649	52	64			
11	15	4300	1.5	3550	1.04	10-8824/16-649	52	64			
			0.8		1.4	10-8825/17-649	52	64			
			1.06		1.9	10-8826/19-649	52	64			
15	20	5850	1.6	4850	1.0	15-8825/17-649	52	64			
			0.8		1.3	15-8826/19-649	52	64			
18.5	25	7200	1.0	6000	1.09	25-8827/19-649	52	64			
22	30	8600	0.8	7100	1.0	30-8827/19-649	52	64			

성능 및 선정표(4P)2단 (Selection & Performance table - Double Reduction - 4P)

Ratio	Motor		50 Hz			60 Hz			Model	Dimension Dwg (Page)	
	CAP (KW)	Sym	Output Speed rpm	Output Torque Kgf.m	SF	Output Speed rpm	Output Torque Kgf.m	SF		CAP-Frame-Ratio	H
731 (43x17)	0.2	02	2.1	88	1.1	2.5	73	1.3	02-8813/08-731	48	60
					1.4			1.9	02-8814/08-731	48	60
	0.4	05		175	1.0		145	1.0	05-8813/08-731	48	60
					1.2			1.4	05-8816/09-731	48	60
					1.8			2.1	05-8817/08-731	48	60
	0.75	1		330	1.0		272	1.1	1-8817/09-731	48	60
					1.5			1.8	1-8818/10-731	50	62
	1.5	2		660	1.0		545	1.0	2-8818/10-731	50	62
					1.2			1.4	2-8819/11-731	50	62
					1.5			1.8	2-8820/13-731	50	62
	2.2	3		970	0.8		803	1.0	3-8819/11-731	50	62
					1.3			1.6	3-8821/13-731	50	62
	3.7	5	1600	1.0	1330	1.0	5-8821/13-731	50	62		
				1.0		1.2	5-8822/13-731	52	64		
				1.3		1.5	5-8823/16-731	52	64		
	5.5	8	2400	1.0	2000	1.0	8-8823/16-731	52	64		
				1.07		1.3	8-8824/16-731	52	64		
				1.4		1.7	8-8825/17-731	52	64		
	7.5	10	3300	0.9	2700	1.0	10-8824/16-731	52	64		
				1.02		1.2	10-8825/17-731	52	64		
				1.4		1.7	10-8826/19-731	52	64		
	11	15	4830	0.9	4000	1.0	15-8825/17-731	52	64		
				1.0		1.12	15-8826/19-731	52	64		
				1.4		1.67	15-8827/19-731	52	64		
15	20	6600	0.8	5450	1.0	20-8826/19-731	52	64			
			1.03		1.2	20-8827/19-731	52	64			
18.5	25	8150	1.0	6750	1.0	25-8827/19-731	52	64			
841 (29x29)	0.2	02	1.8	100	1.0	2.1	84	1.0	02-8813/08-841	48	60
					1.3			1.3	02-8814/09-841	48	60
	0.4	05		200	0.9		165	1.0	05-8814/09-841	48	60
					1.0			1.20	05-8816/09-841	48	60
					1.5			1.9	05-8817/09-841	48	60
	0.75	1		380	1.0		315	1.0	1-8817/10-841	48	60
					1.3			1.6	1-8818/10-841	50	62
					2.1			2.5	1-8819/11-841	50	62
	1.5	2		760	1.0		630	1.0	2-8818/10-841	50	62
					1.06			1.2	2-8819/11-841	50	62
					1.4			1.6	2-8821/13-841	50	62
	2.2	3		1110	1.0		920	1.0	3-8819/11-841	50	62
			1.1		1.3	3-8821/13-841		50	62		
			1.3		1.60	3-8822/13-841		52	64		
	3.7	5	1860	0.8	1550	1.0	5-8822/13-841	52	64		
				1.0		1.2	5-8823/16-841	52	64		
				1.4		1.6	5-8824/16-841	52	64		
				1.7		2.1	5-8825/17-841	52	64		
	5.5	8	2780	1.0	2310	1.1	8-8824/16-841	52	64		
				1.1		1.4	8-8825/17-841	52	64		
				1.6		2.0	8-8826/19-841	52	64		
	7.5	10	3800	0.8	3150	1.0	10-8825/17-841	52	64		
				1.2		1.4	10-8826/19-841	52	64		
				1.8		2.2	10-8827/19-841	52	64		
11	15	5580	0.8	4620	1.0	15-8826/19-841	52	64			
			1.2		1.5	15-8827/19-841	52	64			
15	20	7610	1.0	6310	1.1	20-8827/19-841	52	64			

성능 및 선정표(4P)2단 (Selection & Performance table - Double Reduction - 4P)

Ratio	Motor		50 Hz			60 Hz			Model	Dimension Dwg (Page)	
	CAP (KW)	Sym	Output Speed rpm	Output Torque Kgf.m	SF	Output Speed rpm	Output Torque Kgf.m	SF		CAP-Frame-Ratio	H
1003 (59x17)	0.2	02	1.5	120	0.9	1.8	100	1.0	02-8813/08-1003	48	60
					1.1			1.3			
	0.4	05		240	1.0		200	1.0	05-8816/09-1003	48	60
					1.32			1.6	05-8817/09-1003	48	60
	0.75	1		450	1.0		375	1.0	1-8817/09-1003	48	60
					1.1			1.3	1-8818/10-1003	50	62
					1.7			2.1	1-8819/11-1003	50	62
	1.5	2		905	0.7		750	0.8	2-8818/10-1003	50	62
					0.9			1.1	2-8819/11-1003	50	62
					1.1			1.3	2-8820/13-1003	50	62
	2.2	3		1320	1.0		1090	1.1	3-8821/13-1003	50	62
					1.2			1.4	3-8822/13-1003	52	64
			1.5		1.8	3-8823/16-1003		52	64		
	3.7	5	2210	0.8	1850	1.0	5-8822/13-1003	52	64		
				0.9		1.1	5-8823/16-1003	52	64		
				1.1		1.4	5-8824/16-1003	52	64		
				1.5		1.8	5-8825/17-1003	52	64		
	5.5	8	3310	0.8	2730	1.0	8-8824/16-1003	52	64		
				1.0		1.2	8-8825/17-1003	52	64		
				1.4		1.7	8-8826/19-1003	52	64		
	7.5	10	4520	0.8	3750	1.0	10-8825/17-1003	52	64		
				1.0		1.2	10-8826/19-1003	52	64		
				1.5		1.8	10-8827/19-1003	52	64		
	11	15	6630	0.5	5500	1.0	15-8826/19-1003	52	64		
1.0				1.2		15-8827/19-1003	52	64			
1247 (43x29)	0.2	02	1.2	150	0.9	1.4	125	1.0	02-8813/08-1247	48	60
					1.0			1.1			
	0.4	05		300	0.8		245	1.0	05-8816/09-1247	48	60
					1.0			1.2	05-8817/09-1247	48	60
	0.75	1		560	0.8		465	0.9	1-8817/09-1247	48	60
					0.9			1.0	1-8818/10-1247	50	62
					1.4			1.7	1-8819/11-1247	50	62
	1.5	2		1250	0.8		1090	0.9	2-8819/11-1247	50	62
					0.9			1.0	2-8820/11-1247	50	62
					1.0			1.1	2-8821/13-1247	50	62
	2.2	3		1620	0.8		1350	0.9	3-8821/13-1247	50	62
					0.9			1.1	3-8822/13-1247	52	64
			1.2		1.4	3-8823/16-1247		52	64		
			1.5		1.9	3-8824/16-1247		52	64		
	3.7	5	2750	0.9	2300	1.0	5-8823/16-1247	52	64		
				1.0		1.1	5-8824/16-1247	52	64		
				1.2		1.5	5-8825/17-1247	52	64		
	5.5	8	4100	0.7	3400	0.9	8-8824/16-1247	52	64		
				0.8		1.0	8-8825/17-1247	52	64		
				1.1		1.3	8-8826/19-1247	52	64		
	7.5	10	5600	0.8	4650	1.0	10-8826/19-1247	52	64		
				1.2		1.4	10-8827/19-1247	52	64		
	11	15	8250	0.8	6850	1.0	15-8827/19-1247	52	64		

성능 및 선정표(4P)2단 (Selection & Performance table - Double Reduction - 4P)

Ratio	Motor		50 Hz			60 Hz			Model	Dimension Dwg (Page)	
	CAP (KW)	Sym	Output Speed rpm	Output Torque Kgf.m	SF	Output Speed rpm	Output Torque Kgf.m	SF		CAP-Frame-Ratio	H
	1479 (87x17)	0.4	05	1.0	355	0.8	1.2	295	0.9		05-8816/09-1479
0.9						1.0			05-8817/09-1479	48	60
0.75		1	660		0.9	550		1.0	1-8818/10-1479	50	62
					1.2			1.4	1-8819/11-1479	50	62
1.5		2	1320		0.7	1100		0.8	2-8819/11-1479	50	62
					0.9			1.0	2-8821/13-1479	50	62
2.2		3	1950		0.8	1600		0.9	3-8822/13-1479	52	64
					0.9			1.0	3-8823/16-1479	52	64
					1.1			1.4	3-8824/16-1479	52	64
3.7		5	3300		0.9	2700		1.0	5-8824/16-1479	52	64
					1.0			1.1	5-8825/17-1479	52	64
5.5		8	4900		0.8	4050		1.0	8-8825/17-1479	52	64
					0.9			1.1	8-8826/19-1479	52	64
7.5		10	6600		1.0	5500		1.2	10-8827/19-1479	52	64
1849 (43x43)	0.4	05	0.81	183	0.97	183	1.0	05-8816/09-1849	48	60	
				278		1.0	05-8817/09-1849	48	60		
				404		1.01	337	1.22	05-8818/10-1849	50	52
	0.75	1		830		0.9	690	1.0	1-8818/10-1849	50	52
						1.0		1.16	1-8819/11-1849	50	52
	1.5	2		1650		0.9	1350	1.0	2-8821/13-1849	50	52
						1.0		1.14	2-8822/13-1849	52	64
	2.2	3		2440		0.8	2020	0.9	3-8822/13-1849	52	64
						0.9		1.0	3-8823/16-1849	52	64
						1.0		1.27	3-8824/16-1849	52	64
	3.7	5		4110		0.8	3410	0.9	5-8824/16-1849	52	64
						0.9		1.0	5-8825/17-1849	52	64

성능 및 선정표(4P)2단 (Selection & Performance table - Double Reduction - 4P)

Ratio	Motor		50 Hz			60 Hz			Model	Dimension Dwg (Page)	
	CAP (KW)	Sym	Output Speed rpm	Output Torque Kgf.m	SF	Output Speed rpm	Output Torque Kgf.m	SF		CAP-Frame-Ratio	H
	2065 (59x35)	0.2	02	0.73	93	0.8	0.87	93	0.8		02-8813/08-2065
125					0.8	125		0.9	02-8814/08-2065	48	60
214					1.0	214		1.0	02-8816/09-2065	48	60
321					1.23	321		1.48	02-8817/09-2065	48	60
0.4		05	254		0.8	254		0.8	05-8816/09-2065	48	60
			321		0.9	321		0.9	05-8817/09-2065	48	60
			510		1.0	510		1.09	05-8818/10-2065	50	62
0.75		1	510		0.8	510		0.9	1-8818/10-2065	50	62
			811		1.0	811		1.04	1-8819/11-2065	50	62
1.5		2	948		0.8	948		0.9	2-8820/11-2065	50	62
			1290		0.9	1290		1.0	2-8821/13-2065	50	62
			1620		1.0	1620		1.02	2-8822/13-2065	52	64
2.2		3	1620		0.8	1620		0.9	3-8823/16-2065	52	64
			2090		0.9	2090		1.0	3-8823/16-2065	52	64
			2630		1.0	2630		1.14	3-8824/16-2065	52	64
3.7		5	2630		0.8	2630		0.9	5-8824/16-2065	52	64
			3520		0.9	3520		1.0	5-8825/17-2065	52	64
5.5		8	4690		0.9	4690		1.0	8-8826/19-2065	52	64
			6950		1.0	6950		1.19	8-8827/19-2065	52	64
7.5		10	6950		1.0	6950		1.0	10-8827/19-2065	52	64
2537 (59x43)	0.2	02	0.59	93	0.8	0.71	93	0.8	02-8813/08-2537	48	60
				125	0.8		125	0.9	02-8814/08-2537	48	60
				214	0.9		214	1.0	02-8816/09-2537	48	60
				321	1.0		321	1.20	02-8817/09-2537	48	60
	0.4	05		321	0.8		321	0.9	05-8817/09-2537	48	60
				510	1.0		510	1.0	05-8818/10-2537	50	62
				510	0.8		510	0.9	1-8818/10-2537	50	62
	0.75	1		811	0.9		811	0.9	1-8819/11-2537	50	62
				948	1.0		948	1.0	1-8820/11-2537	50	62
	1.5	2		948	0.8		948	0.9	2-8820/11-2537	50	62
				1290	0.9		1290	0.9	2-8821/13-2537	50	62
				1620	1.10		1620	1.0	2-8822/13-2537	52	64
	2.2	3		2090	0.8		2090	0.9	3-8823/16-2537	52	64
				2630	1.0		2630	1.0	3-8824/16-2537	52	64
	3.7	5		3520	1.0		3520	1.0	5-8825/17-2537	52	64
				4690	0.9		4690	0.9	8-8826/19-2537	52	64
	5.5	8		6950	1.0		6950	1.0	8-8827/19-2537	52	64
				6950	1.0		6950	1.0	10-8827/19-2537	52	64
	7.5	10		6950	1.0		6950	1.0	10-8827/19-2537	52	64
	3045 (87x35)	0.2		02	0.49		99	0.8	0.59	99	0.8
125			0.8			125	0.9	02-8814/08-3045		48	60
209			0.9			209	1.0	02-8816/09-3045		48	60
321			1.0			321	1.0	02-8817/09-3045		48	60
0.4		05	321	0.8		321	0.9	05-8817/09-3045		48	60
			510	1.0		510	1.0	05-8818/10-3045		50	62
			811	1.0		811	1.0	1-8819/11-3045		50	62
0.75		1	1150	0.8		1150	0.9	2-8821/13-3045		50	62
			1540	1.0		1540	1.0	2-8822/13-3045		52	64
1.5		2	1750	0.9		1750	0.9	3-8823/16-3045		52	64
			2310	1.0		2310	1.0	3-8824/16-3045		52	64
			3160	1.0		3160	1.0	5-8825/17-3045		52	64
3.7		5	4490	0.9		4490	0.9	8-8826/17-3045		52	64
			6950	1.0		6950	1.0	8-8827/19-3045		52	64
5.5		8	6950	1.0		6950	1.0	10-8827/19-3045		52	64
			6950	1.0		6950	1.0	10-8827/19-3045		52	64
7.5		10	6950	1.0		6950	1.0	10-8827/19-3045		52	64

성능 및 선정표(4P)2단 (Selection & Performance table - Double Reduction - 4P)

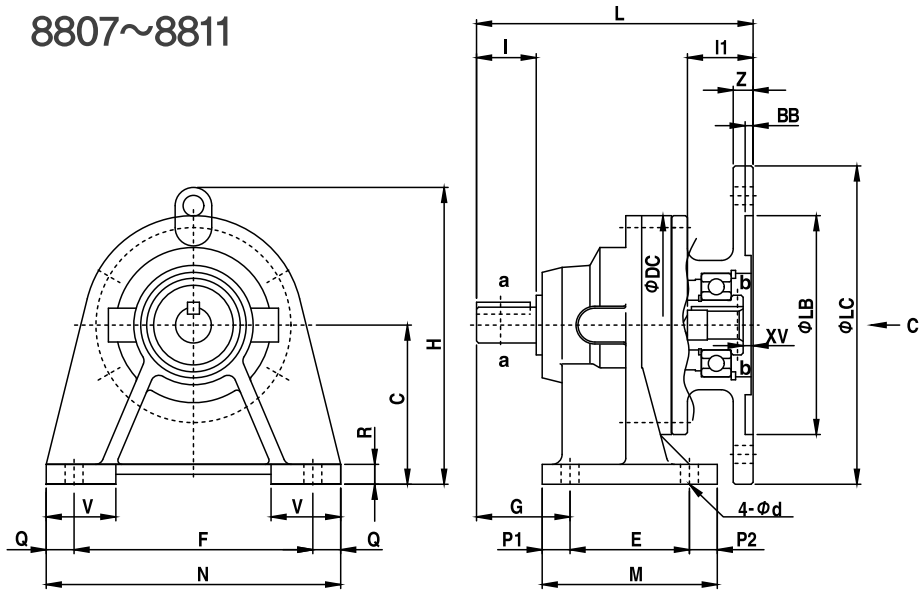
Ratio	Motor		50 Hz			60 Hz			Model	Dimension Dwg (Page)	
	CAP (KW)	Sym	Output Speed rpm	Output Torque Kgf.m	SF	Output Speed rpm	Output Torque Kgf.m	SF		CAP-Frame-Ratio	H
	3481 (59x59)	0.2	02	0.43	93	0.8	0.52	93	0.8		02-8813/08-3481
125					0.8	125		0.9	02-8814/08-3481	48	60
214					0.9	214		1.0	02-8816/09-3481	48	60
321					1.0	321		1.0	02-8817/09-3481	48	60
0.4		05	321		0.8	321		0.9	05-8817/09-3481	48	60
			510		1.0	510		1.0	05-8818/10-3481	50	62
0.75		1	811		0.9	811		0.9	1-8819/11-3481	50	62
			948		1.0	893		1.0	1-8820/11-3481	50	62
1.5		2	1290		0.8	1290		0.9	2-8821/13-3481	50	62
			1620		1.0	1620		1.0	2-8822/13-3481	52	64
2.2		3	2090		0.9	2090		0.9	3-8823/16-3481	52	64
			2630		1.0	2630		1.0	3-8824/16-3481	52	64
3.7		5	3520		1.0	3520		1.0	5-8825/17-3481	52	64
			4690		0.9	4690		0.9	8-8826/19-3481	52	64
5.5		8	6950		1.0	6950		1.0	8-8827/19-3481	52	64
			6950		1.0	6950		1.0	10-8827/19-3481	52	64
4437 (87x51)	0.2	02	0.34	93	0.8	0.41	93	0.8	02-8813/08-4437	48	60
				125	0.8		125	0.9	02-8814/08-4437	48	60
				214	0.9		209	1.0	02-8816/09-4437	48	60
				321	1.0		321	1.0	02-8817/09-4437	48	60
	0.4	05		510	1.0		510	1.0	05-8818/10-4437	60	62
				811	1.0		811	1.0	1-8819/11-4437	60	62
	0.75	1		1150	0.8		1150	0.9	2-8821/13-4437	60	62
				1620	1.0		1540	1.0	2-8822/13-4437	52	64
	2.2	3		2090	0.8		1750	0.9	3-8823/16-4437	52	64
				2630	1.0		2310	1.0	3-8824/16-4437	52	64
	3.7	5		3520	1.0		3160	1.0	5-8825/17-4437	52	64
				4690	0.9		4690	0.9	8-8826/19-4437	52	64
5.5	8	6950	1.0	6950	1.0	8-8827/19-4437	52	64			
		6950	1.0	6950	1.0	10-8827/19-4437	52	64			
5133 (87x59)	0.2	02	0.29	93	0.8	0.35	93	0.8	02-8813/08-5133	48	60
				125	0.8		125	0.9	02-8814/08-5133	48	60
				214	0.9		209	1.0	02-8816/09-5133	48	60
				321	1.0		321	1.0	02-8817/09-5133	48	60
	0.4	05		510	1.0		510	1.0	05-8818/10-5133	50	62
				811	0.9		811	0.9	1-8819/11-5133	50	62
	0.75	1		948	1.0		948	1.0	1-8820/11-5133	50	62
				1290	0.8		1290	0.9	2-8821/13-5133	50	62
	1.5	2		1620	1.0		1620	1.0	2-8822/13-5133	52	64
				2090	0.9		2090	0.9	3-8823/16-5133	52	64
	2.2	3		2630	1.0		2630	1.0	3-8824/16-5133	52	64
				3520	1.0		3520	1.0	5-8825/17-5133	52	64
	3.7	5		4690	0.8		4690	0.9	8-8826/19-5133	52	64
				6950	1.0		6950	1.0	8-8827/19-5133	52	64
	5.5	8		6950	1.0		6950	1.0	10-8827/19-5133	52	64
				6950	1.0		6950	1.0	10-8827/19-5133	52	64

성능 및 선정표(4P)2단 (Selection & Performance table - Double Reduction - 4P)

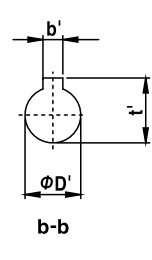
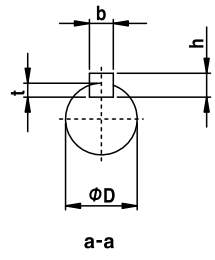
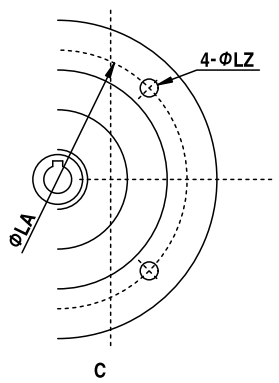
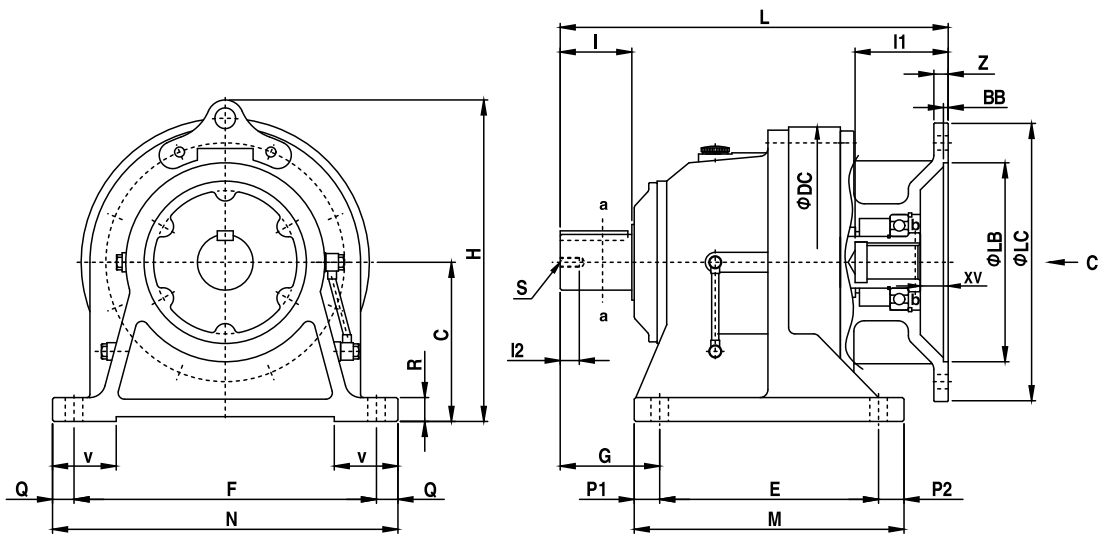
Ratio	Motor		50 Hz			60 Hz			Model	Dimension Dwg (Page)				
	CAP (KW)	Sym	Output Speed rpm	Output Torque Kgf.m	SF	Output Speed rpm	Output Torque Kgf.m	SF		CAP-Frame-Ratio	H	V		
	6177 (87x71)	0.2	02	0.24	93	0.8	0.29	93	0.8		02-8813/09-6177	48	60	
125					0.8	125		0.9	02-8814/09-6177	48	60			
214					0.9	209		0.9	02-8816/09-6177	48	60			
321					1.0	321		1.0	02-8817/09-6177	48	60			
0.4		05	510		1.0	510		1.0	05-8818/10-6177	50	62			
			811		1.0	811		1.0	1-8819/11-6177	50	62			
0.75		1	1290		0.8	1150		0.9	2-8821/13-6177	50	62			
			1620		1.0	1540		1.0	2-8822/13-6177	52	64			
1.5		2	2090		0.9	1750		0.9	3-8823/16-6177	52	64			
			2630		1.0	2310		1.0	3-8824/16-6177	52	64			
3.7		5	3520		1.0	3160		1.0	5-8825/17-6177	52	64			
			4690		0.8	4690		0.9	8-8826/19-6177	52	64			
5.5		8	6950		1.0	6950		1.0	8-8827/19-6177	52	64			
			7.5		10	6150		1.0	6150	1.0	10-8827/19-6177	52	64	
7569 (87x87)		0.2	02		0.20	93		0.8	0.24	93	0.8	02-8813/09-7569	48	60
						125		0.8		125	0.9	02-8814/09-7569	48	60
	214			0.9		209	0.9	02-8816/09-7569		48	60			
	321			1.0		321	1.0	02-8817/09-7569		48	60			
	0.4	05	510	1.0		510	1.0	05-8818/10-7569		50	62			
			811	1.0		811	1.0	1-8819/11-7569		50	62			
	0.75	1	1290	0.8		1150	0.9	2-8821/13-7569		50	62			
			1620	1.0		1540	1.0	2-8822/13-7569		52	64			
	1.5	2	2090	0.8		1750	0.9	3-8823/16-7569		52	64			
			2630	1.0		2310	1.0	3-8824/16-7569		52	64			
	3.7	5	3520	1.0		3160	1.0	5-8825/17-7569		52	64			
			4690	0.8		4690	0.9	8-8826/19-7569		52	64			
	5.5	8	6950	1.0		6950	1.0	8-8827/19-7569		52	64			
			7.5	10		6150	1.0	6150		1.0	10-8827/19-7569	52	64	

IEC 플랜지 수평형 외형도 (Dimensions-IEC Flange type-Horizontal)

● [1] KHX 8807~8811



● [2] KHX 8813~8816



IEC 플랜지 수평형 외형도(Dimensions-IEC Flange type-Horizontal)

형식	표준동력		도면 NO	C	DC	E	F	G	H	H'	L	M	N	P1	P2	Q	R	V	d
	KW	rpm																	
KHX02-8807	0.2	1500/1800 (50HZ/60HZ)	1	80	110	60	120	41	160	-	126.5	84	144	12	12	12	10	35	9
KHX02-8808			1	80	110	60	120	47	160	-	132.5	84	144	12	12	12	10	35	9
KHX02-8809			1	100	150	90	150	60	207	-	183	130	180	15	25	15	12	40	11
KHX02-8810	0.4	1500/1800 (50HZ/60HZ)	1	100	150	90	150	60	207	-	188.5	135	180	15	30	15	12	40	11
KHX05-8808			1	80	110	60	120	47	160	-	139	84	144	12	12	12	10	35	9
KHX05-8809			1	100	150	90	150	60	207	-	190	130	180	15	25	15	12	40	11
KHX05-8810	0.75	1500/1800 (50HZ/60HZ)	1	100	150	90	150	60	207	-	201	135	180	15	30	15	12	40	11
KHX1-8809			1	100	150	90	150	60	207	-	204	130	180	15	25	15	12	40	11
KHX1-8810			1	100	150	90	150	60	207	-	203	135	180	15	30	15	12	40	11
KHX1-8811	1.5	1500/1800 (50HZ/60HZ)	1	120	204	115	190	82	257	-	245	155	230	20	20	20	15	55	14
KHX2-8810			1	100	150	90	150	60	207	-	221	135	180	15	30	15	12	40	11
KHX2-8811			1	120	204	115	190	82	257	-	255	155	230	20	20	20	15	55	14
KHX2-8813	2.2	1500/1800 (50HZ/60HZ)	2	150	230	145	290	100	300	-	308.5	195	330	25	25	20	22	65	18
KHX2-8814			2	150	230	145	290	120	300	-	328.5	195	330	25	25	20	22	65	18
KHX3-8811			1	120	204	115	190	82	257	-	271.5	155	230	20	20	20	15	55	14
KHX3-8813	3.7	1500/1800 (50HZ/60HZ)	2	150	230	145	290	100	-	291	324	195	330	25	25	20	22	65	18
KHX3-8814			2	150	230	145	290	120	-	291	344	195	330	25	25	20	22	65	18
KHX3-8816			2	160	300	150	370	139	-	358	385	238	410	44	44	20	25	75	18
KHX5-8811	5.5	1500/1800 (50HZ/60HZ)	1	120	204	115	190	82	257	-	271.5	155	230	20	20	20	15	55	14
KHX5-8813			2	150	230	145	290	100	-	316	324	195	330	25	25	20	22	65	18
KHX5-8814			2	150	230	145	290	120	-	316	344	195	330	25	25	20	22	65	18
KHX5-8816	7.5	1500/1800 (50HZ/60HZ)	2	160	300	150	370	139	-	358	385	238	410	44	44	20	25	75	18
KHX8-8813			2	150	230	145	290	100	-	341	349.5	195	330	25	25	20	22	65	18
KHX8-8814			2	150	230	145	290	120	-	341	369.5	195	330	25	25	20	22	65	18
KHX8-8815	11	1500/1800 (50HZ/60HZ)	2	160	230	145	290	120	-	351	369.5	195	330	25	25	20	22	70	18
KHX8-8816			2	160	300	150	370	139	-	358	403	238	410	44	44	20	25	75	18
KHX10-8813			2	150	230	145	290	100	-	341	349.5	195	330	25	25	20	22	65	18
KHX10-8814	15	1500/1800 (50HZ/60HZ)	2	150	230	145	290	120	-	341	369.5	195	330	25	25	20	22	65	18
KHX10-8816			2	160	300	150	370	139	-	358	403	238	410	44	44	20	25	75	18
KHX15-8816			2	160	300	150	370	139	-	358	436	238	410	44	44	20	25	75	18
KHX20-8816	2	160	300	150	370	139	-	358	436	238	410	44	44	20	25	75	18		

형식	표준동력		도면 NO	출력 축								입력 축				LA	LB	LC	LZ	BB	XV	Z	모터 프레임
	KW	rpm		D	I	b	h	t	S	I2	D'	I1	b'	t'									
KHX02-8807	0.2	1500/1800 (50HZ/60HZ)	1	14	25	5	5	3	-	-	11	25	4	12.8	130	110	160	9	4	1	10	63	
KHX02-8808			1	18	30	6	6	3.5	-	-	11	25	4	12.8	130	110	160	9	4	1	10		
KHX02-8809			1	28	35	8	7	4	-	-	11	25	4	12.8	130	110	160	9	4	6.5	9		
KHX02-8810	0.4	1500/1800 (50HZ/60HZ)	1	28	35	8	7	4	-	-	11	25	4	12.8	130	110	160	M8	4	4.5	9	71	
KHX05-8808			1	18	30	6	6	3.5	-	-	14	33	5	16.3	130	110	160	9	4	5	10		
KHX05-8809			1	28	35	8	7	4	-	-	14	36	5	16.3	130	110	160	9	4	10	10.5		
KHX05-8810	0.75	1500/1800 (50HZ/60HZ)	1	28	35	8	7	4	-	-	14	35	5	16.3	130	110	160	9	4	10	11	80	
KHX1-8809			1	28	35	8	7	4	-	-	19	47	6	21.8	165	130	200	11	4	15	11		
KHX1-8810			1	28	35	8	7	4	-	-	19	44	6	21.8	165	130	200	11	4	14	13.5		
KHX1-8811	1.5	1500/1800 (50HZ/60HZ)	1	38	55	10	8	5	-	-	19	46	6	21.8	165	130	200	11	4	14	14	90L	
KHX2-8810			1	28	35	8	7	4	-	-	24	53	8	27.3	165	130	200	11	4	8	11.5		
KHX2-8811			1	38	55	10	8	5	-	-	24	60	8	27.3	165	130	200	11	4	18	13		
KHX2-8813	2.2	1500/1800 (50HZ/60HZ)	2	50	70	14	9	5.5	M10	18	24	54	8	27.3	165	130	200	11	4	11	12	100L	
KHX2-8814			2	50	90	14	9	5.5	M10	18	24	54	8	27.3	165	130	200	11	4	11	12		
KHX3-8811			1	38	55	10	8	5	-	-	28	73	8	31.3	215	180	250	14	5	25	18		
KHX3-8813	3.7	1500/1800 (50HZ/60HZ)	2	50	70	14	9	5.5	M10	18	28	74	8	31.3	215	180	250	14	4.5	20	14	112M	
KHX3-8814			2	50	90	14	9	5.5	M10	18	28	74	8	31.3	215	180	250	14	4.5	20	14		
KHX3-8816			2	60	90	18	11	7	M10	18	28	72	8	31.3	215	180	250	14	4.5	30	14		
KHX5-8811	5.5	1500/1800 (50HZ/60HZ)	1	38	55	10	8	5	-	-	28	73	8	31.3	215	180	250	14	5	25	18	132S	
KHX5-8813			2	50	70	14	9	5.5	M10	18	28	74	8	31.3	215	180	250	14	4.5	20	14		
KHX5-8814			2	50	90	14	9	5.5	M10	18	28	74	8	31.3	215	180	250	14	4.5	20	14		
KHX5-8816	7.5	1500/1800 (50HZ/60HZ)	2	60	90	18	11	7	M10	18	28	72	8	31.3	215	180	250	14	4.5	30	14	132M	
KHX8-8813			2	50	70	14	9	5.5	M10	18	38	90	10	41.3	265	230	300	14	5	26	15		
KHX8-8814			2	50	90	14	9	5.5	M10	18	38	90	10	41.3	265	230	300	14	5	26	15		
KHX8-8815	11	1500/1800 (50HZ/60HZ)	2	50	90	14	9	5.5	M10	18	38	90	10	41.3	265	230	300	14	5	26	15	160M	
KHX8-8816			2	60	90	18	11	7	M10	18	38	84	10	41.3	265	230	300	14	4.5	25	15		
KHX10-8813			2	50	70	14	9	5.5	M10	18	38	90	10	41.3	265	230	300	14	5	26	15		
KHX10-8814	15	1500/1800 (50HZ/60HZ)	2	50	90	14	9	5.5	M10	18	38	90	10	41.3	265	230	300	14	5	26	15	160L	
KHX10-8816			2	60	90	18	11	7	M10	18	42	115	12	45.3	300	250	350	18	6	26	18		
KHX15-8816			2	60	90	18	11	7	M10	18	42	115	12	45.3	300	250	350	18	6	26	18		
KHX20-8816	2	60	90	18	11	7	M10	18	42	115	12	45.3	300	250	350	18	6	26	18				